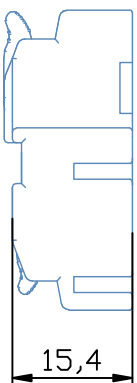
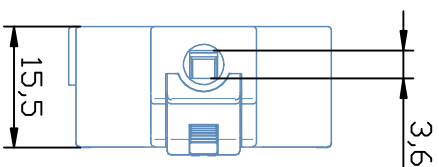
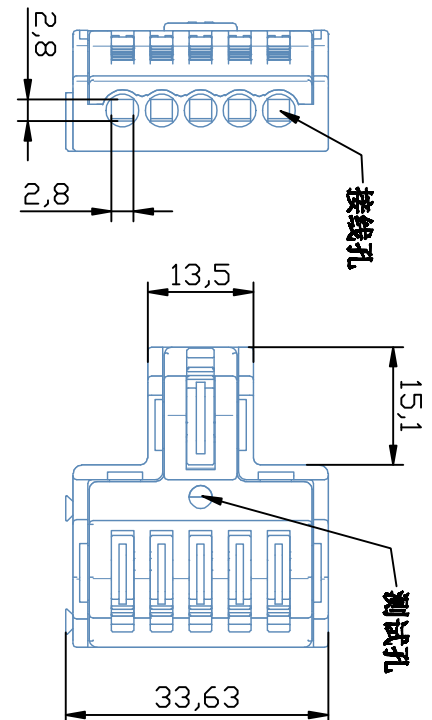
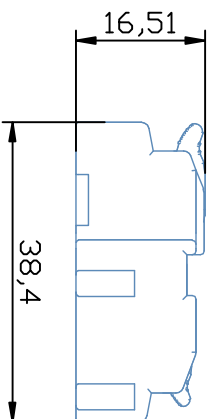
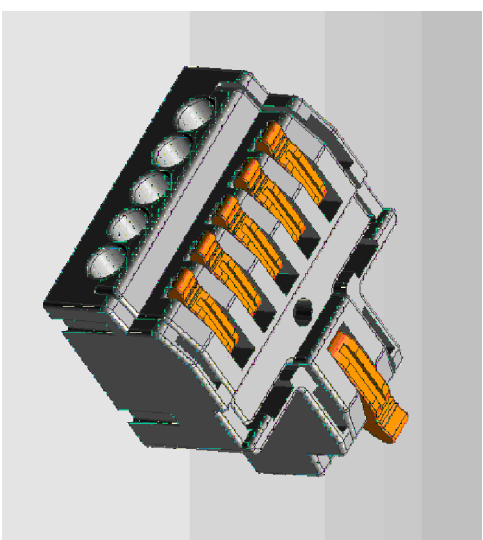


精度等级/General	tolerance/(mm)	0	>3	>6	>10	>18	>30	>50	>80	>120	>180	>250	>315	>400	>500	0.1/10
~	~	~	~	~	~	~	~	~	~	~	~	~	~	~	~	±Z
±0.12	±0.18	±0.22	±0.26	±0.31	±0.37	±0.57	±0.80	±0.93	±1.05	±1.15	±1.60	±2.20	±2.50	±Z		



REV	ECN	DESCRIPTION	DRT	DATE

MATERIAL:	/	SURFACE:	/
MAT NO.:	/		
STATUS:	/		
APPD: Lon	CHH2020.03.24	NAME:	KV231-15
CHKD: Gong	YZ2020.03.24	DRAWING NO.:	KV231-15
DRT: CENGWZ	2018.10.18	TYPE:	CUSTOMER_DRAWING
		SCALE:	2:1
		REV	TO
		SHEET	1/1

4	排线扣	不锈钢	301
3	导线槽	紫铜	
2	Cover	PA66	UL94V-2
1	Housing	PC	UL94V-2
ITEM	NAME OF PART	MATERIAL	NOTES
UL 标准 / UL Standard:	B	C	D
额定电压/电涌/Rated Voltage(V)/Current(A)	450	/	32A
IEC 标准 / IEC Standard:			
过压类别 / Overvoltage Category / 污染等级 / Pollution Degree	III/2		
额定电压/电涌/Rated Voltage(V)/Current(A)	450/32		
额定脉冲电压(kV)/Rate Impulse Voltage(kV)	8.0		
拉力/pull(N/m/Lb.in)	0.8/8		
线控范围(导线mm²线-线)(出线mm²线-线)	4-2.5		
间距/Pitch(mm)/线数范围/Poles	5/N=02~5P		
剥线长度/Stripping length(mm)	10-12		
使用温度范围/Operating Temperature(°C)	-40~+105		
符合RoHS要求/Conform to RoHS	Yes		
标准颜色编号/Standard color number:	/		
PANTONE / RAL			



中国·康伟电子有限公司
China Kamei Electronics Co., Ltd